



**TECNOSTABLE**  
Animal Care Automation

## **MASTERSTABLE**

Centralized and automatic  
horse manure suction system

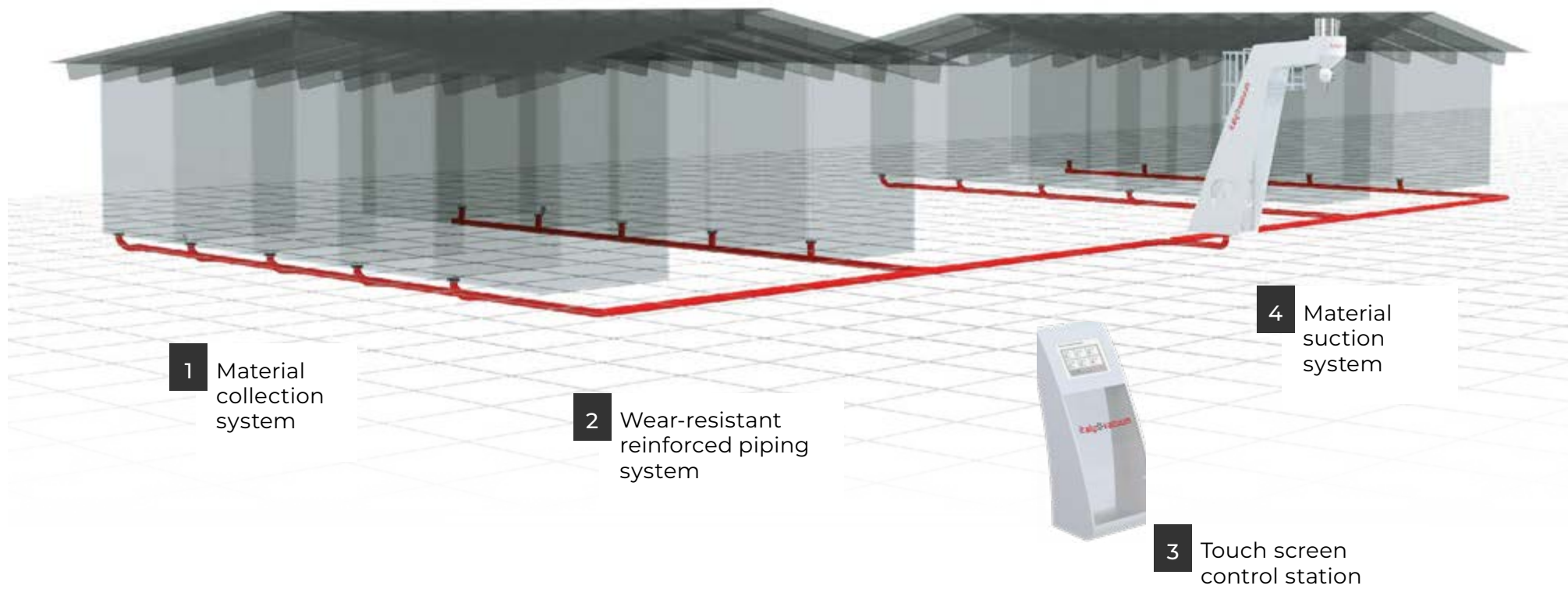


Environmental  
Engineering  
Division



*The innovation that transforms stable management*

The system consists of **4 main components**, available in **standard configurations** or with **custom designs** for specific requests.



To **keep your stables clean** and carry out **necessary operations smoothly**, three different **collection system** are available:

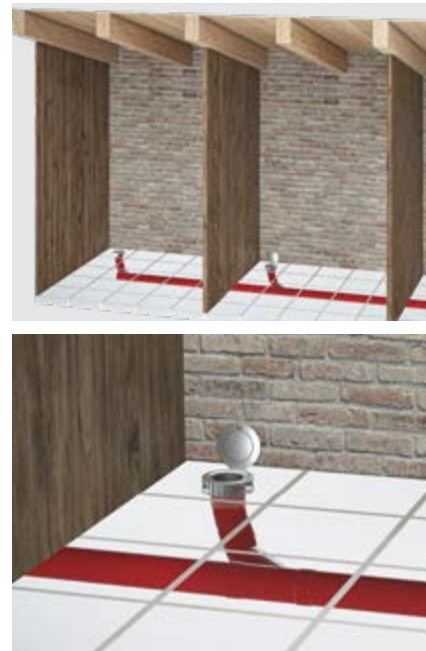
**A** Angled collection mouth



**B** Flexible arm with rigid collection terminal



**C** Floor-level collection hatch

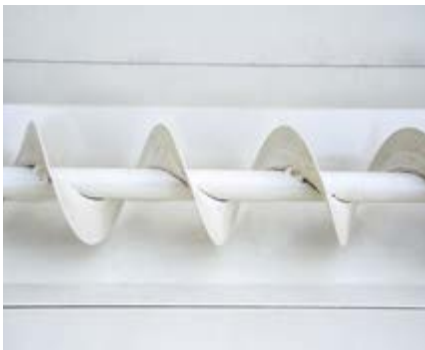


*The system is suitable for all types of terrain.*

Efficiency in transferring materials is the core of our **suction system**.

We offer a **range of solutions** to ensure that horse manure is sucked **safely** and **with maximum efficiency**, through specialized containers or trucks.

**A** Motorized screw conveyor



**B** Conveyor belt



**C** Outdoor and indoor suction solutions for top unloading





### Touch Control Station

#### Human Machine Interface

The powerful TCS software station manages the advanced electronics of the Masterstable system, allowing **real-time remote control of the entire setup**.

It **optimizes performance** and enables **preventive maintenance** when needed.

Thanks to its icon-based interface, it is **extremely intuitive** and **easy to use**, requiring just a few minutes of training to unlock its full potential. **Available in vertical totem** or **wall-mounted versions** for space optimization.





### Advantages of the system:

- Installable in both new and existing structures
- Specifically designed to improve animal well-being
- Provides a distinctive and elite profile to your equestrian center
- Incomparable operational efficiency
- Significant reduction in bedding usage
- Strengthens the innovative and cutting-edge image of the business
- Drastic reduction of execution time and costs (-70%)
- Optimization of human resources, reducing waste
- Guaranteed economic savings
- Increases staff motivation and satisfaction
- Advanced automation for collection and material removed by suction
- Reuse of material in biogas plants
- Complete elimination of dust for better horse well-being
- Reduction of environmental impact/eco-friendly solution
- High-tech sensor system and self-diagnosis routine for any type of anomaly
- Hi-Tech visual and electronic monitoring of the entire disposal cycle (24/7)



# MASTERSTABLE

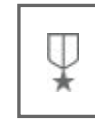
*More than a system, an investment in your future*



## Adopting MASTERSTABLE means:



Improving the well being of your horse



Differentiating yourself from the competition



Reducing medium/long-term expenses



Increase the commercial attractiveness

## Don't let the future pass you by!

Take the **decisive step** today to transform your facility into a benchmark of **innovation, efficiency, and animal care**.

**Contact us now** for a **personalized consultation** and discover how Masterstable can revolutionize your business.

+ TECHNOLOGY

+ SAVINGS

+ EFFICIENCY


Italyvacuum uses only **high-efficiency** premium or super-premium **class motors** that drastically reduce energy consumption through responsible power management. These motors **not only outperform traditional motors** at the same power level, but also maintain high efficiency across varying loads, ensuring **optimal performance** under all operating conditions.

italy\*vacuum  
GROUP

Strada Della Fabbrina 6/E

61122 Pesaro - Italy

Tel. (+39) 0721-62 42 90

 (+39) 338-432-9772

[info@tecnostable.com](mailto:info@tecnostable.com)

[www.tecnostable.com](http://www.tecnostable.com)

In a continuous effort of research and improvement, Italy Vacuum Srl reserves the right to make changes to products at any time without notice. The values provided are purely indicative.



Respect the environment!  
Think before printing this document.

